

## Context of Character

- ▶ Context of character- The Background to a character that might influence the way they are and act (Mickey is brought up in a single parent home in a deprived area of Liverpool in the 1970's with 7 other brothers and sisters. Eddie is brought up by both parents, as an only child with lots of wealth and money.

## Blood Brothers

Is a play about two brothers who are separated at birth due to Mrs Johnstone (their mum) not being able to afford to keep both children. Mr and Mrs Lyons bring up Edward as their own child (Mr Lyons doesn't know that Edward is not his child due to the secret held between Mrs Johnstone and Mrs Lyons when both boys were born). The scene you perform is when Mickey and Edward meet whilst out playing for the first time....

## Mannerism

- ▶ Mannerisms are actions that we do regularly that are personal to you. They are often a gesture that is repeated.
- ▶ For example; you might always have the mannerism of biting your nails when you're nervous!



## Physical Performance skills

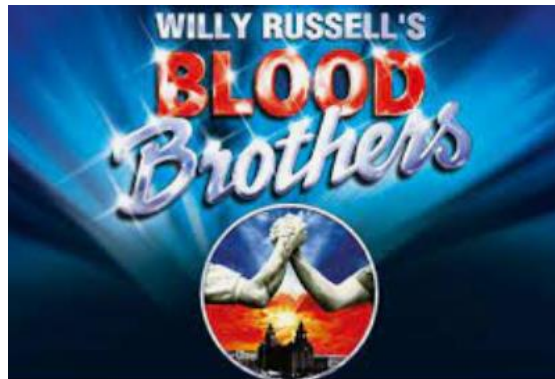
Gestures- An action performed with hands or head.

Mannerisms- A repeated action or habit

Body language- Actions you do with your body to show emotion

Levels/proxemics- Distance used with your body to show the relationship with another

## BLOOD BROTHERS- DEVELOPING CHARACTER SKILLS



## Vocal Performance skills

Pitch- How 'high' or how 'low' your voice goes.

Pace- The speed at which you speak

Tone- The emotion you use within your voice

Volume- How loud or quiet you speak

Accent- a distinctive way of pronouncing a language- Mickey would use a Liverpool accent in this script for example

## Reaction and Facial Expressions

- ▶ Reacting is when an actor responds to what another actor is saying through movement or facial expressions.
- ▶ This is really important as it makes the scene you're performing more believable to watch and as an audience member you tend to enjoy the performance more.



## Pace

- ▶ PACE: Pace is the speed in which you may say something or the speed in which you move.
- ▶ You might have a slow pace of voice to show that you are tired or a quick pace of voice to show that you are excited.

PACE

## Use of props

- ▶ The use of props in a scene can help to bring a performance to life. Using a prop that links to a character's context can be most effective!
- ▶ Mickey- Broken paper Aeroplane
- ▶ Eddie- bag of sweets/small toy.

