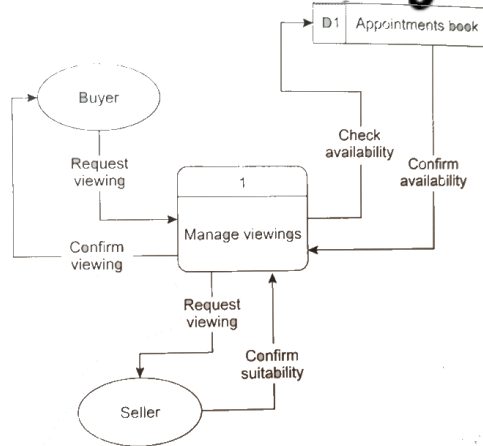


# Data Flow Diagrams

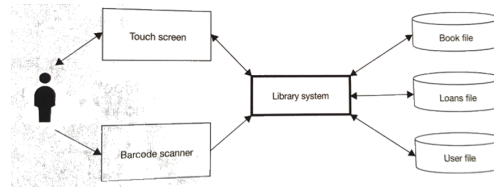


Used to model the flow of data between a system and external people, devices and organisations

Identify the shapes used


# SYSTEM DIAGRAMS

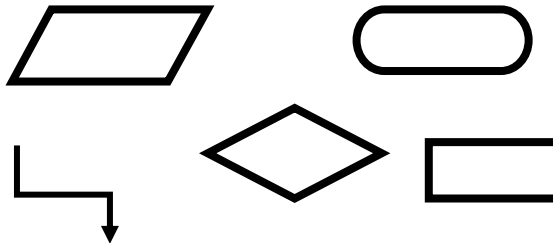
System diagrams shows inputs, processing and outputs in any system



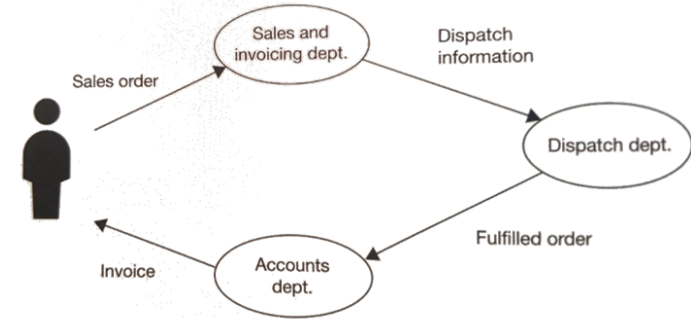
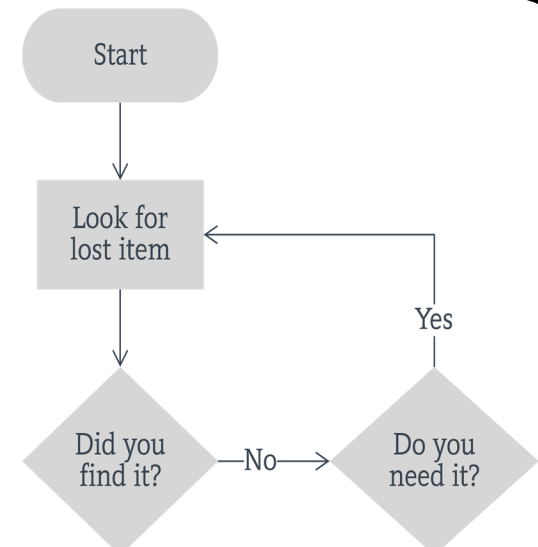
## Learning Aim D1 Forms of Notation

# FLOWCHARTS

Label the shapes used



Flowcharts can be used to represent an activity or algorithm



Information flow diagrams are like data flow diagrams (DFDs) but show only the exchange of information between individuals or departments

# Information Flow Diagrams